

# Flute Fingering Chart

Low B foot joint only.

B	C	C# D $\flat$	D	D# E $\flat$	E

F	F# G $\flat$	G	G# A $\flat$	A	A# B $\flat$
					 or  or 

B	C	C# D $\flat$	D	D# E $\flat$	E	F
		 or (lowers pitch)				

F# G $\flat$	G	G# A $\flat$	A	A# B $\flat$	B	C
				 or  or 		

C# D $\flat$	D	D# E $\flat$	E	F	F# G $\flat$	G
			 or (lowers pitch)	 or (lowers pitch)	 or (lowers pitch)	

G# A $\flat$	A	A# B $\flat$	B	C	C# D $\flat$	D
 or (lowers pitch)				 (add "gizmo" on low B foot joint only)	 or 	

(When more than one fingering is shown, the first is the most common.)

# One Octave Scales & Arpeggios

## In All Twelve Major Key Signatures

*B $\flat$*  

*F* 

*C* 

*G* 

*D* 

*A* 

*E* 

*B* 

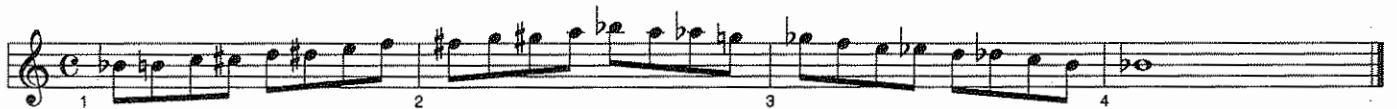
*F $\sharp$*  



*Chromatic Exercises*



*B $\flat$  Chromatic Scale*



*F Chromatic Scale*



# Full Range Scales

In All Twelve Major Key Signatures

B $\flat$   Musical notation for the B-flat major scale in treble clef, common time. The scale starts on B-flat and ends on B-flat. It consists of two lines of music: the first line contains the ascending and descending scales, and the second line contains a whole note B-flat at the end.


F  Musical notation for the F major scale in treble clef, common time. The scale starts on F and ends on F. It consists of two lines of music: the first line contains the ascending and descending scales, and the second line contains a whole note F at the end.

C  Musical notation for the C major scale in treble clef, common time. The scale starts on C and ends on C. It consists of two lines of music: the first line contains the ascending and descending scales, and the second line contains a whole note C at the end.

G  Musical notation for the G major scale in treble clef, common time. The scale starts on G and ends on G. It consists of two lines of music: the first line contains the ascending and descending scales, and the second line contains a whole note G at the end.

D  Musical notation for the D major scale in treble clef, common time. The scale starts on D and ends on D. It consists of two lines of music: the first line contains the ascending and descending scales, and the second line contains a whole note D at the end.

A  Musical notation for the A major scale in treble clef, common time. The scale starts on A and ends on A. It consists of two lines of music: the first line contains the ascending and descending scales, and the second line contains a whole note A at the end.

E  Musical notation for the E major scale in treble clef, common time. The scale starts on E and ends on E. It consists of two lines of music: the first line contains the ascending and descending scales, and the second line contains a whole note E at the end.

B  Musical notation for the B major scale in treble clef, common time. The scale starts on B and ends on B. It consists of two lines of music: the first line contains the ascending and descending scales, and the second line contains a whole note B at the end.

For flutes with a B foot.

*B*

*E#*

*Gb*

*Db*

*Ab*

*Eb*

Full Range Chromatic - For Flutes Only