

B♭ Tenor Saxophone Fingering Chart

A♯	B♭	B	C	C♯	D♭	D	D♯	E♭	E

F	F♯	G♭	G	G♯	A♭	A	A♯	B♭

(raises pitch)

B	C	C♯	D♭	D	D♯	E♭	E	F

(raises pitch) (raises pitch) (lowers pitch)

F♯	G♭	G	G♯	A♭	A	A♯	B♭	B

bis

C	C♯	D♭	D	D♯	E♭	E	F

(lowers pitch)

(Notes on gray background are suggested altissimo fingerings.)

F♯	G♭	G	G♯	A♭	A	A♯	B♭	B	C

(When more than one fingering is shown, the first is the most common.)

One Octave Scales & Arpeggios

In All Twelve Major Key Signatures

B \flat /C 

F/G 

C/D 

G/A 

D/E 

A/B 

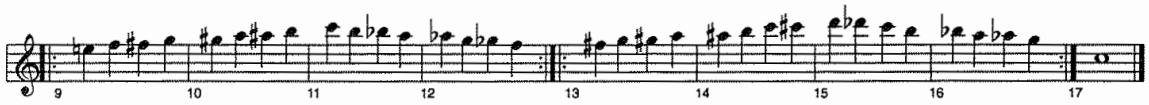
E/F# 

E/G# 

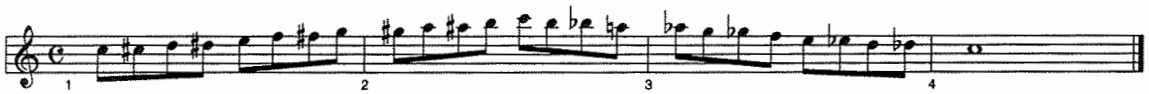
B/D# 



Chromatic Exercises



C Chromatic Scale (Concert B \flat)



G Chromatic Scale (Concert F)



Full Range Scales

In All Twelve Major Key Signatures



For saxes with high F/G \flat keys.



For saxes with high F#/G♭ keys.



Full Range Chromatic - Saxophones Only



For saxes with high F#/G♭ keys.

